

TÔGÔ Fast Track

Technical Assessment

01

TŌGŌ Initial setup briefing

02

Environments & requirements

03

User profile synchronization

04

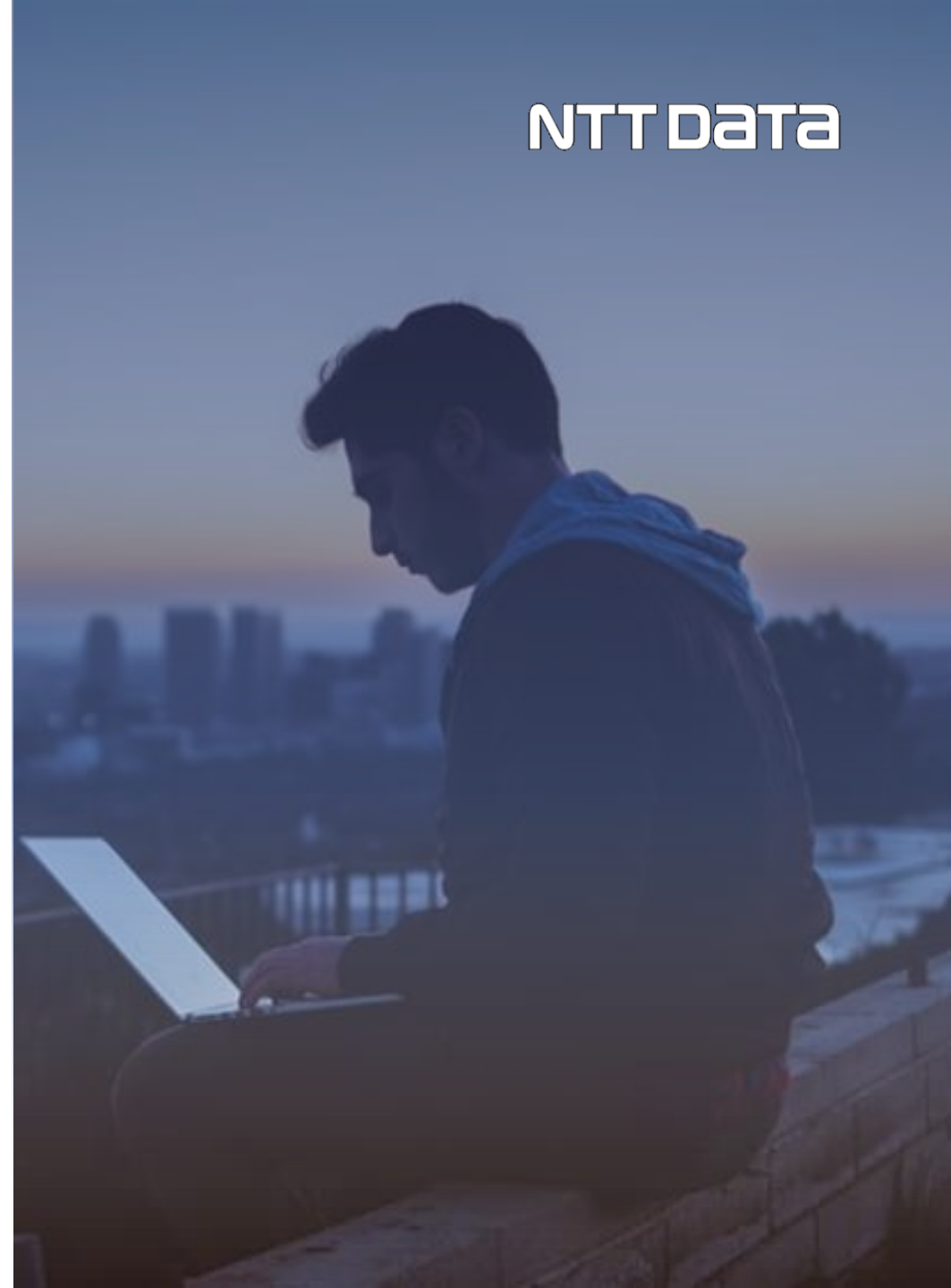
SharePoint Root site

05

Installation Team

06

Next steps



01 TÖGÖ Initial setup briefing

Technical Assessment



Installation



Fast track



Use Case customization

- ☐ Identify environments
- ☐ Validate installation prerequisites
- ☐ Resolve installation variables

- ☐ Unpack and prepare the installation scripts.
- ☐ Prepare environment keys
- ☐ Provisioning Azure Services
- ☐ Deploying Office 365

- ☐ Apply Fast Track template that sets up TÖGÖ ready to run

- ☐ Implement custom use cases using the capabilities provided by TÖGÖ

Installation in 2 sessions

TÖGÖ Solution

🕒 3,5 hours

👥 Office365 Admin & Azure Admin

TÖGÖ Analytics

🕒 2,5 hours

👥 Azure Admin & User with Power BI PRO license

02 Environments & requirements

- ❑ Identify the environments where we need to install TŌGŌ. Recommended 2: PRE and PRO
- ❑ For each environment check the keys, subscriptions and accounts needed for the installation
- ❑ After the installation, the Azure services are set up in a minimum consumption configuration. Before going live, the services will be set up according the expected load.
- ❑ The installation process creates 3 security groups:
 - ❑ TŌGŌ Users. This group is essential to the operation of TŌGŌ. It is mandatory that all licensed users who are going to use the platform be added to this group.
 - ❑ TŌGŌ Admins. All users in this groups will be able to manage and configure TŌGŌ settings.
 - ❑ Toguifiers. Users in this group will be able to “togify” the sites which they are owners.

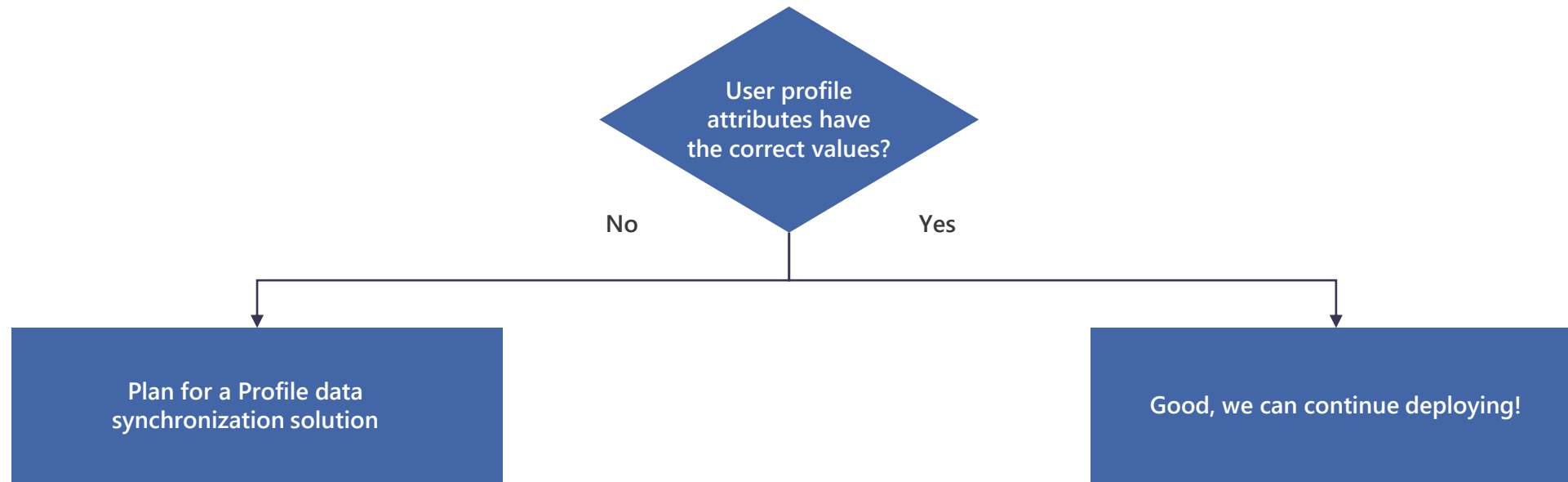
Management of these groups is responsibility of the customer's IT team

03 User profile synchronization

TÔGÔ Audience Target Feature: To take advantage of the capabilities of content audience by user profile data, it is necessary that the **Location** and **Department** attributes are synchronized in the User Profile.

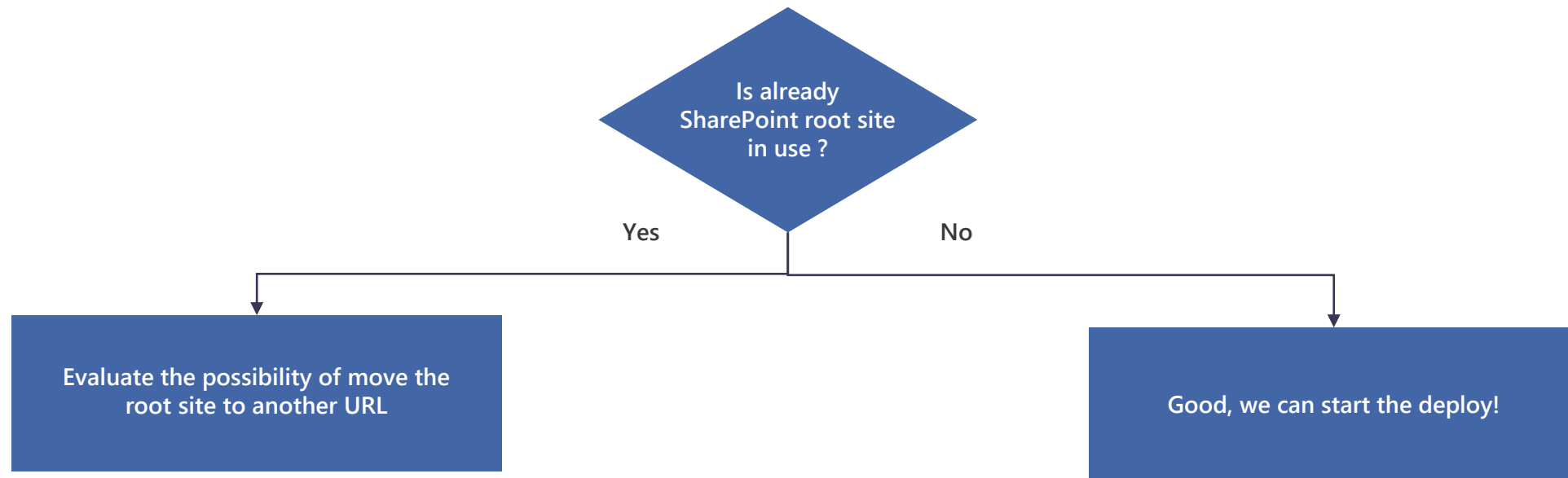
As well as this, some other attributes may be required for the implementation of uses cases related to people search.

It is necessary to verify that these attributes are synchronized in the User Profile and check that they are informed with correct values.

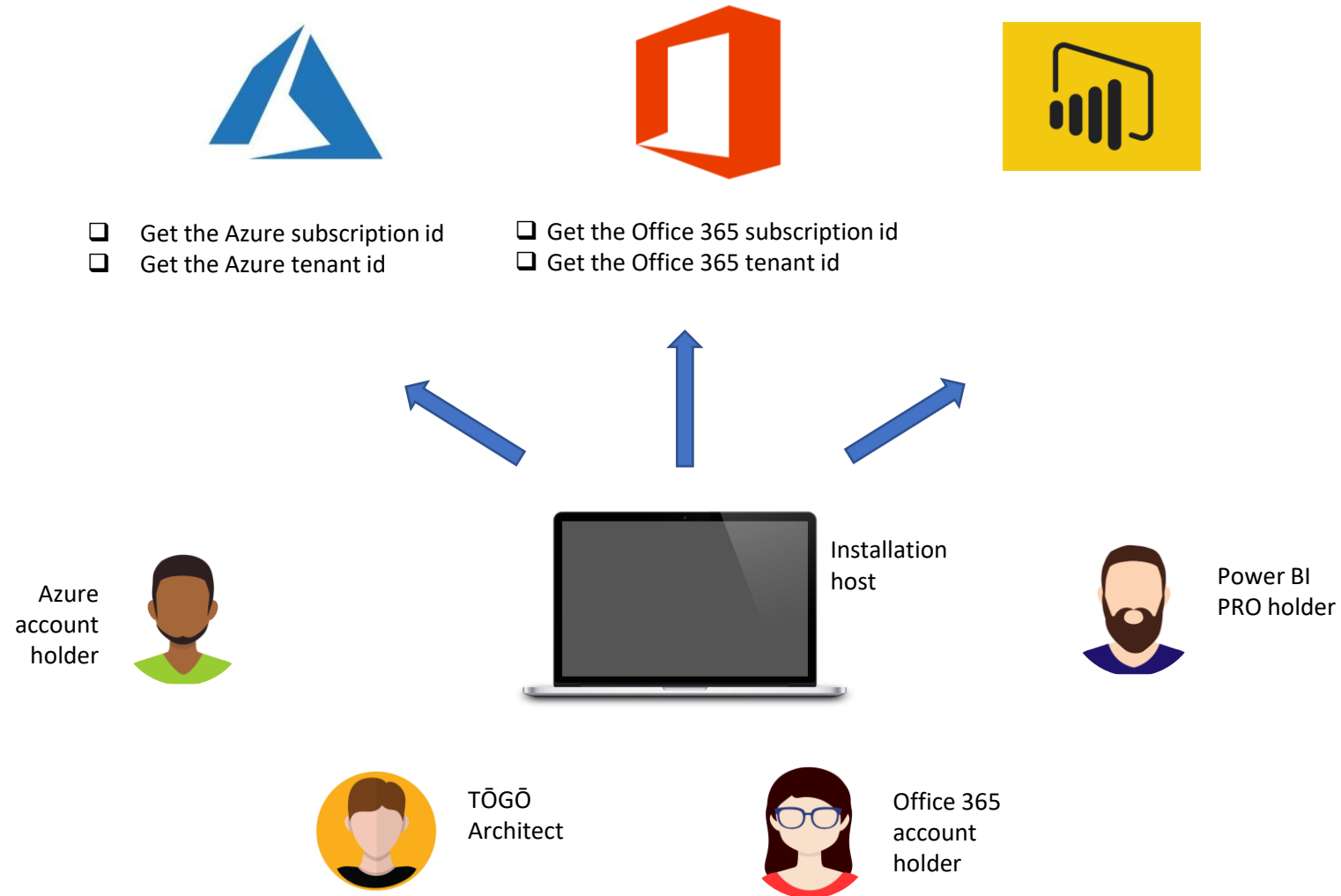


04 SharePoint Root site

It's recommended to use the SharePoint root site to host the intranet landing page. The highlighted advantage of this is that the URL is shorter and easier to remember.



05 Installation Team



06 Next steps

- ❑ Preparation and configuration of the host from which the installation will be launched
- ❑ Depending on the way preferred to install TŌGŌ:
 - ❑ Schedule installation sessions:
 - ❑ Core: With Azure and Office 365 admins
 - ❑ Analytics: With Azure admin and Power BI PRO user
 - ❑ Create a global admin user to the NTT Data team.
- ❑ Evaluate the need to plan any of the following initiatives:
 - ❑ Profile data synchronization solution
 - ❑ Current root site movement